

Group 1 - Project 3 - RLA Project 3

Captured: Mar 24, 2024, Processed: Mar 24, 2024



Map Details Summary ⓘ

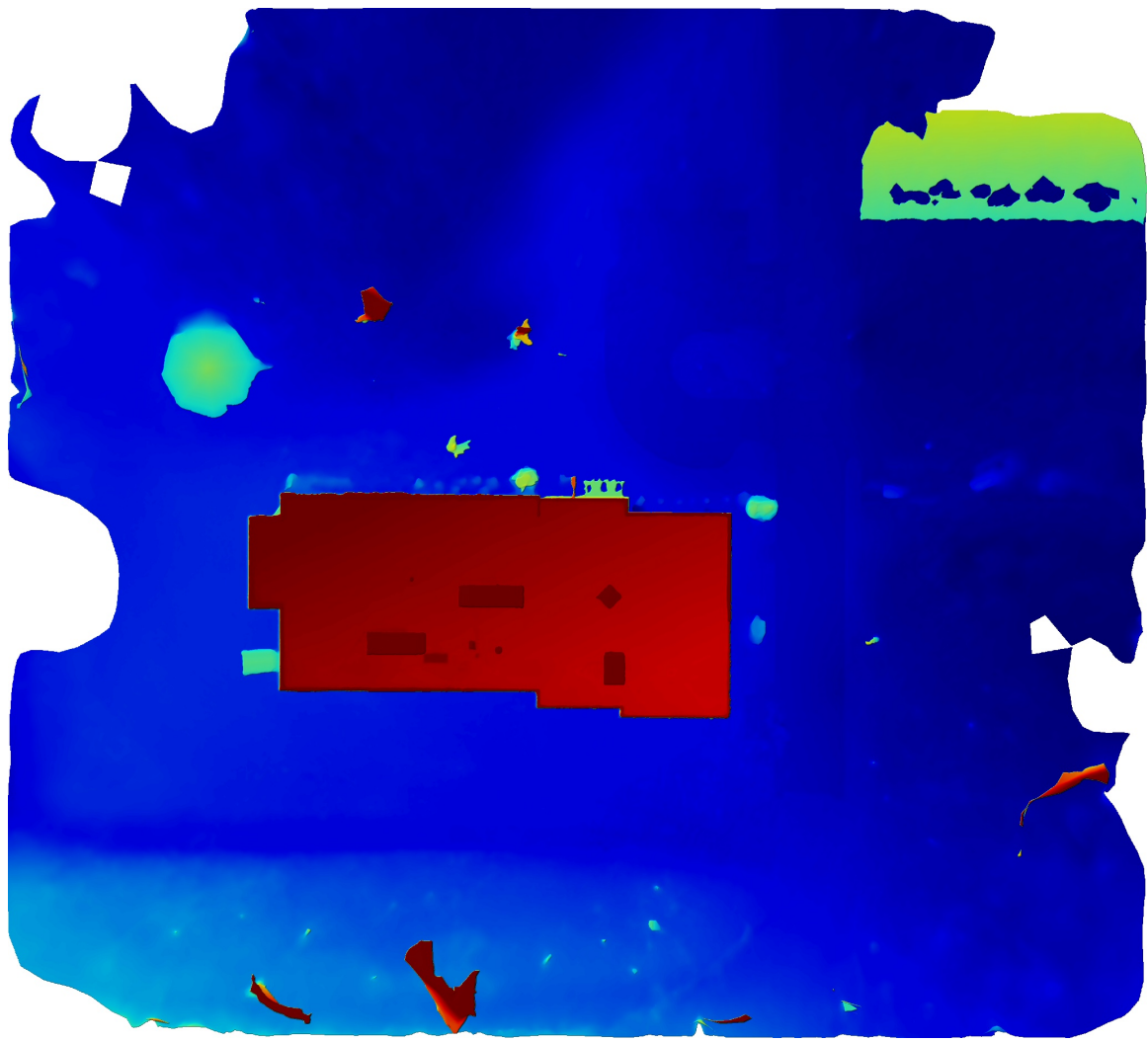
Project Name	Group 1 - Project 3 - RLA Project 3
Photogrammetry Engine	DroneDeploy Proprietary
Date Of Capture	Mar 24, 2024
Date Processed	Mar 24, 2024
GSD Orthomosaic (GSD DEM)	0.37in/px (DEM 1.48in/px)
Area Bounds (Coverage)	421007.90ft ² (30%)
Image Sensors	DJI - FC7303
Average GPS Trust	32.81ft

Quality & Accuracy Summary ⓘ

Image Quality	High texture images
Median Shutter Speed	Low shutter speed 1/60 - motion blur likely.
Images Uploaded (Aligned %)	73 (100%)
Camera Optimization	0.01% variation from reference intrinsics

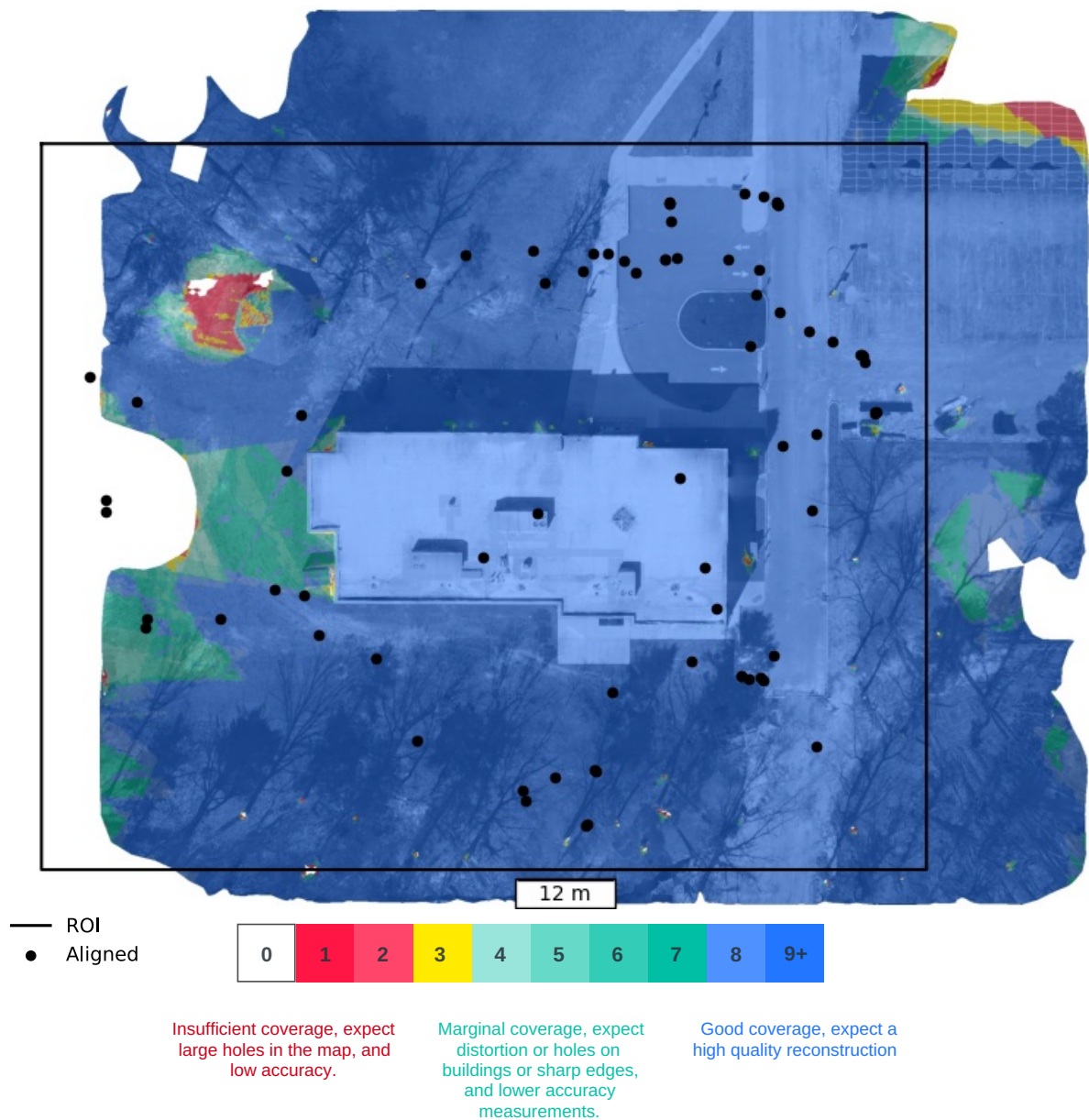
Preview ⓘ





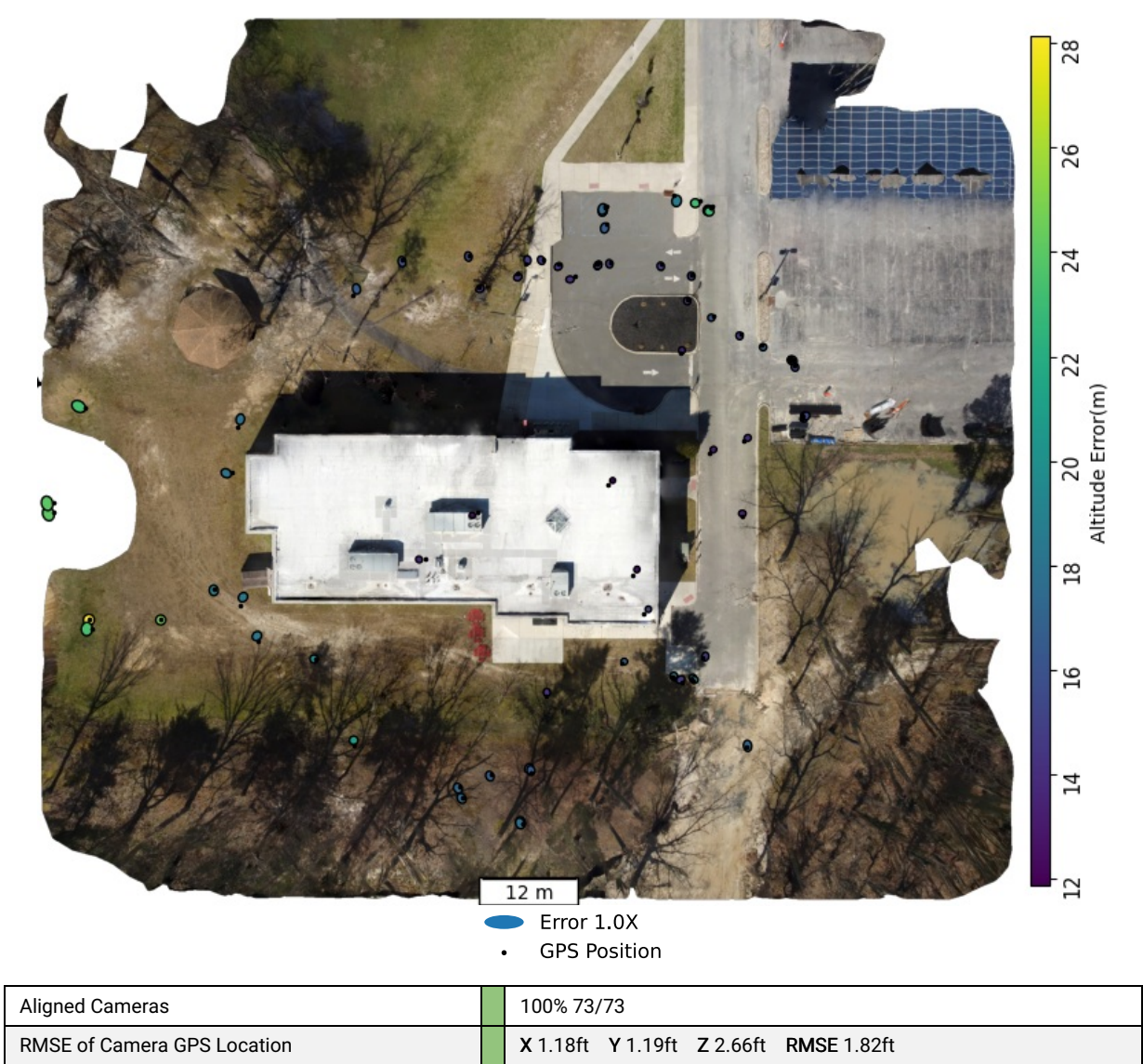
Dataset Quality Review

Orthomosaic Coverage ⓘ



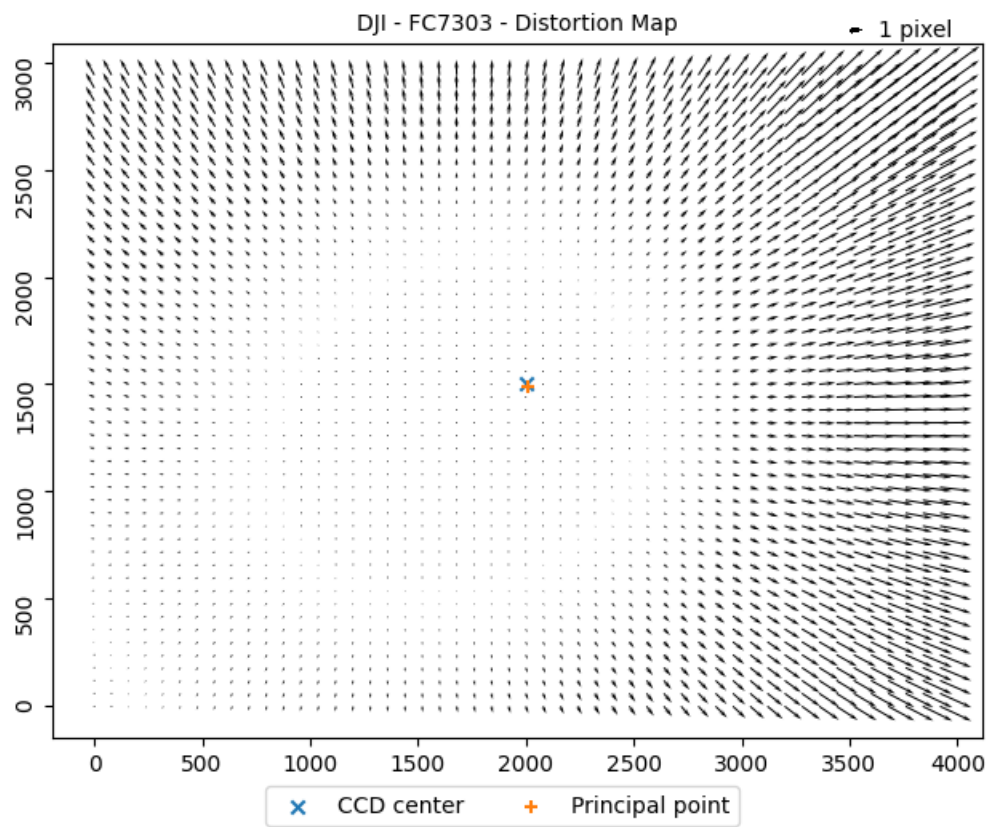
Sensor(s) Used	DJI - FC7303
Image Count (by sensor)	73
Image Resolution	4000x3000 (~12MP)
Orthomosaic coverage (% of area of interest)	30.80
Average Orthomosaic Image Density within Structured Area	18 images/pixel
Median Shutter Speed	Low shutter speed 1/60 - motion blur likely.

Structure from Motion *i*

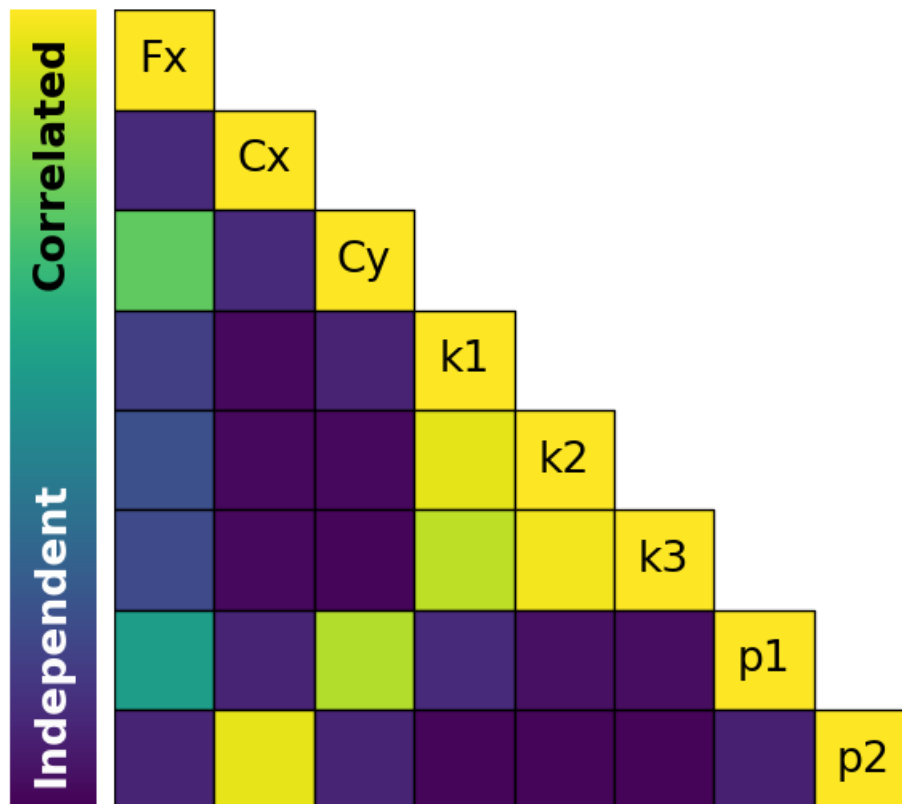


Camera Calibration *i*

Camera Optimization	0.01% variation from reference intrinsics
---------------------	---



	Fx	Cx	Cy	k1	k2	k3	p1	p2
Value	3022.66	2006.48	1489.29	0.00452375	-0.00745163	0.00414389	0.000196882	0.000316821
Error	0.245357	0.310677	0.391408	1.29615	4.8949	5.68243	0.12466	0.134611



Densification and Meshing ⁽ⁱ⁾

Nadir Images	0% Nadir images are needed to make a good orthomosaic
Oblique images	0%
Horizontal images	100% Horizontal images can cause problem with reconstruction if they view the sky.
Total Points	4.7 million
Point Cloud Density	36.59 points/ft ²
Mesh Triangles	353.1 thousand

Digital Elevation Model ⓘ

Mode	Generated from Mesh
DEM GSD	DEM 1.48in/px
Relative/Absolute	Relative Altitude vs Drone takeoff

